



### **Endless Hot Water**

Flow-through, tankless design heats water instantly, for as long as you need it.

### **Save Energy and Money**

When hot water shuts off, AquaStar shuts off.

### **Built to Last**

Solid copper water components eliminate leaks. No mineral build-up preserves efficiency for life of unit.

### **By Bosch**

60 years of tankless water heating experience, and an unparalleled reputation for manufacturing quality.

# Bosch quality, tankless efficiency make AquaStar the clear choice.



# **BOSCH**



### **Reliable Service from CEC**

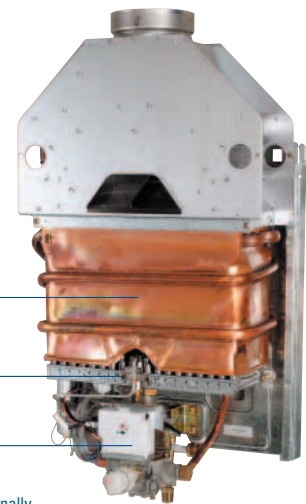
In addition to the quality built into the Bosch AquaStar, every unit has Controlled Energy Corporation's 20 years of experience standing behind it. CEC has been the American pioneer in the tankless water heating industry. Together, Bosch and CEC form an unbeatable team that you can count on.

### **Model 125HX**

solid copper heat exchanger (with 15 year warranty)\*

stainless steel burners

hydro-generated ignition



\*when installed professionally

**CSA, ISO 9002  
Certified**



AQRS6/0602

# Big Energy Savings From Bosch

**Bosch AquaStar, the ideal household gas\* water heater, is available in the following models to perfectly suit your hot water needs:**

**Model 240FX<sup>†</sup>** America's most versatile tankless water heater delivers up to 5 gallons per minute of hot water – enough to supply two major applications simultaneously. See accessories listed below.

**Model 125FX** This tankless water heater from Bosch features a built-in power vent, an electronic ignition and no standing pilot. FXHOOD required. Horizontal venting only.

**Model 125HX** **NEW** The innovators at Bosch have developed a new, patented hydro-generated ignition system that requires no standing pilot, electricity, or batteries. When water flows through the 125HX's hydro generator it spins a tiny turbine which produces the spark required to light the burner. The AquaStar 125HX is the first tankless water heater of this kind.

**Model 125B** Virtually the same heater as the 125HX, but this unit has a standing pilot.

**Model 125BS** The "S" stands for solar. This heater is ideal for use as a back-up to preheated water produced by solar systems.

**Model 38B** Ideal for cottages, camps and other small volume hot water applications.

\* All models available in both natural gas and liquid propane (LP) models.

<sup>†</sup> The AquaStar Model 240FX is manufactured for CEC by Takagi Industries. The AquaStar Model 240FX is not approved in Canada. The AquaStar name is trademarked and licensed by Bosch.

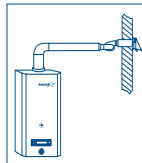
## Specifications

MODEL	240FX	125FX	125HX	125B/BS	38B Camps & Cottages
energy factor	.84	.78	.78	.69	N/A
efficiency	83%	80%	82%	82%	80%
BTU/Input	165,000	125,000	117,000	117,000	40,000
minimum flow rate GPM	0.75	0.5	0.5	0.5	0.6
<b>gallons per minute</b>					
@ 50 degree rise	5.2	3.6	3.6	3.6	1.2
@ 55 degree rise	4.75	3.3	3.3	3.3	1.0
@ 65 degree rise	4.0	2.8	2.8	2.8	0.9
@ 75 degree rise	3.5	2.4	2.4	2.4	0.8
@ 90 degree rise	2.9	2.0	2.0	2.0	0.6
flue size	4 INCH	4 INCH	5 INCH	5 INCH	4 INCH
water inlet	3/4" NPT	1/2" NPT	1/2" NPT	1/2" NPT	1/2" NPT
gas inlet connection	3/4" NPT	1/2" NPT	1/2" NPT	1/2" NPT	1/2" NPT
height	24 1/2"	29 3/4"	29 3/4"	29 3/4"	25 3/8"
width	16 1/2"	18 1/4"	18 1/4"	18 1/4"	10 5/8"
depth	8 5/16"	8 3/4"	8 3/4"	8 3/4"	9 1/8"
shipping weight	65 lbs.	52 lbs.	44 lbs.	44 lbs.	25 lbs.

## Accessories

Model	Description
FXHOOD	Horizontal Vent Terminator with freeze protection for models 125FX/240FX
240TSTAT	Remote Thermostat for 240FX
240BRACKET	Wall Hanging Brackets for 240FX

## Power Vent Option



Power vent option AQ1 for models 125BS, 125B, and 125HX.



Controlled Energy Corporation  
340 Mad River Park, Waitsfield, VT 05673  
phone: 800-503-5028 fax: 802-496-6924  
www.ControlledEnergy.com

Copyright © 2002 Controlled Energy Corporation. All rights reserved.



Our most popular model is the 125B.



Model 240FX can be installed indoors or outside in warm climates.

**Endless hot water for all home uses.\***



\*All 125 models are limited to one major application at a time. Fill times may be longer for jacuzzi type tubs.

Note: Not approved for use in mobile homes.

## ENERGY SAVINGS CHART

MODEL/PRODUCT	Natural Gas		Propane			
	Energy Factor	Annual Cost to Operate	Energy Factor	Annual Cost to Operate		
AquaStar natural gas vs. natural gas tank	\$56 - \$81 (24-35%)	\$90 - \$119 (24-35%)				
AquaStar LP vs. LP tank	\$93 - \$132 (25-35%)	\$125 - \$219 (25-35%)				
AquaStar natural gas vs. electric tank	\$314 - \$339 (64-69%)	\$525 - \$625 (64-69%)				
AquaStar LP vs. electric tank	\$204 - \$243 (42-50%)	\$352 - \$478 (42-50%)				
	Cost 1	Cost 2	Cost 1	Cost 2		
AquaStar 125B	.69	\$174	\$206	.69	\$285	\$380
AquaStar 125HX	.78	\$154	\$182	.78	\$252	\$336
AquaStar 125FX	.78	\$154	\$182	.78	\$252	\$336
AquaStar 240FX <sup>†</sup>	.81	\$146	\$174	.84	\$240	\$320
40-gallon tank	.52	\$230	\$273	.52	\$377	\$505
75-gallon tank	.48	\$249	\$296	.48	\$408	\$547

<sup>†</sup> Model 240FX is manufactured for CEC by Takagi Industrial. The AquaStar name is trademarked and licensed by Bosch.

\*The above charts represent approximate energy savings figures based on the U.S. Dept. of Energy test method for water heaters. Cost 1 is at \$1.20/gallon of propane, \$0.20/therm of natural gas, and \$0.10 per KW of electricity. Cost 2 is at \$1.60/gallon of propane, \$0.35/therm of natural gas, and \$0.15 per KW of electricity. Costs calculated on supplying 64.3 gallons of hot water a day heated to 77°F temperature rise. Annual fuel usage is constant over the 20-plus year life span of a Bosch AquaStar. Storage tanks lose up to 50% efficiency and fuel usage can increase 30% within the 8-10 year life span of tank. This efficiency decrease is not calculated in the savings figures.